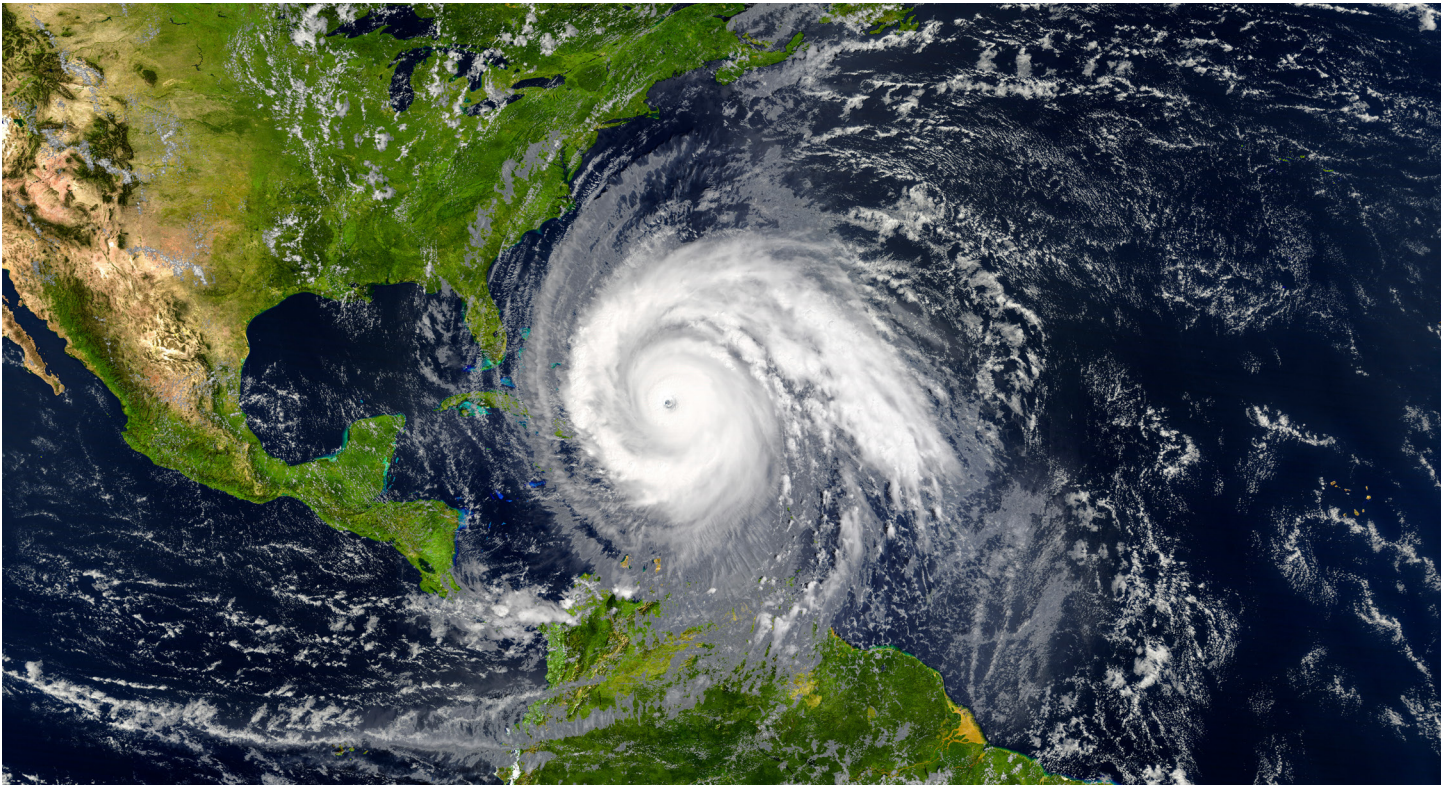


The Infrastructure Behind Disaster Recovery



When floods, hurricanes, and severe weather strikes, pumps and generators play an important part in recovery efforts. Effective disaster response depends on more than just equipment performance; it requires advanced planning, coordinated logistics, and a resilient supply chain.

For Tsurumi Pump, disaster relief begins well before the storm occurs. Preparation efforts focus on forecasting risk, positioning inventory, and working closely with distributors and rental partners to ensure that critical equipment is readily available.

Planning for High-Risk Conditions

Pre-storm planning prioritizes critical infrastructure, including hospitals, water, and wastewater treatment plants, emergency operation centers, and other facilities where downtime is detrimental.

Early planning helps ensure equipment availability to prevent shortages that often follow severe weather forecasts. Typically, high volume pumps are positioned for flood control and levee protection, sewage and wastewater

pumps support lift stations, and submersible utility pumps are staged for flooding. Plants that handle hazardous materials also rely on pre-planned pumping solutions to mitigate flood risk. Critical infrastructure facilities will commonly have generators and pumps on site during months where flooding and power outages are more likely to occur.

Inventory Readiness

A key challenge in disaster preparedness is aligning inventory timing with unpredictable demand. Once severe weather is forecasted, demand for pumps and generators can spike rapidly. To address this, Tsurumi works with distributors to build inventory ahead of hurricane season, rather than reacting once demand has already escalated.

The Infrastructure Behind Disaster Recovery

When disasters strike, Tsurumi is already ahead—stocked, staged, and ready to respond.



Stocked and ready: Tsurumi keeps essential pumps on hand for rapid disaster response.

As storms approach, communication across the supply chain becomes critical. Tsurumi provides distributors with frequent inventory availability updates and proactively contacts distributors outside of the affected regions to identify additional stock that could be mobilized if needed. This approach creates flexibility at a time when logistics constraints are at their highest.

By proactively forecasting products, planning inventory, and coordinating with distributors, Tsurumi reinforces its commitment to supporting disaster recovery.

CONTACT

TSURUMI (AMERICA), INC.
1625 Fullerton Ct
Glendale Heights, IL 60139

Marissa Nge
Marketing Generalist
marissan@tsurumiamerica.com
(630) 547-2298

Yumiko T. Lindgren
Marketing Manager
yumikot@tsurumiamerica.com
(630) 547-2245

 Follow Tsurumi America on Social Media



ABOUT TSURUMI

Tsurumi (America), Inc., a division of Tsurumi Manufacturing, was founded in 1979. Headquartered in Glendale Heights, Illinois, Tsurumi (America), Inc. has bases in Quebec, Canada; El Paso, Texas; and Salt Lake City. Globally, Tsurumi is active in 45 countries and has been an innovator in the pump industry since 1924. Tsurumi (America) is a provider of leading pumping technology in construction, civil engineering, mining, industrial wastewater, municipal wastewater, sewage treatment, flood control and scenery creation fields. Tsurumi products are backed by independent, third-party verification. Beyond leading pump technology, Tsurumi (America) is recognized for its robust distribution network and one of the largest on-hand inventories in North America.